



OELA
Office of English Language Acquisition

2017 Project Directors Meeting

In Pursuit of Higher Education for All



Designing Evaluations to Meet What Works Clearinghouse™ Standards

November 8, 2017

Jonathan Jacobson, Senior Research Scientist
National Center for Education Evaluation and Regional Assistance
Institute of Education Sciences

Overview

- What is the What Works Clearinghouse™?
- What are WWC Standards?
- How Does the WWC Review a Study?
- Considerations to Keep in Mind
- Connecting with the WWC and TA Resources



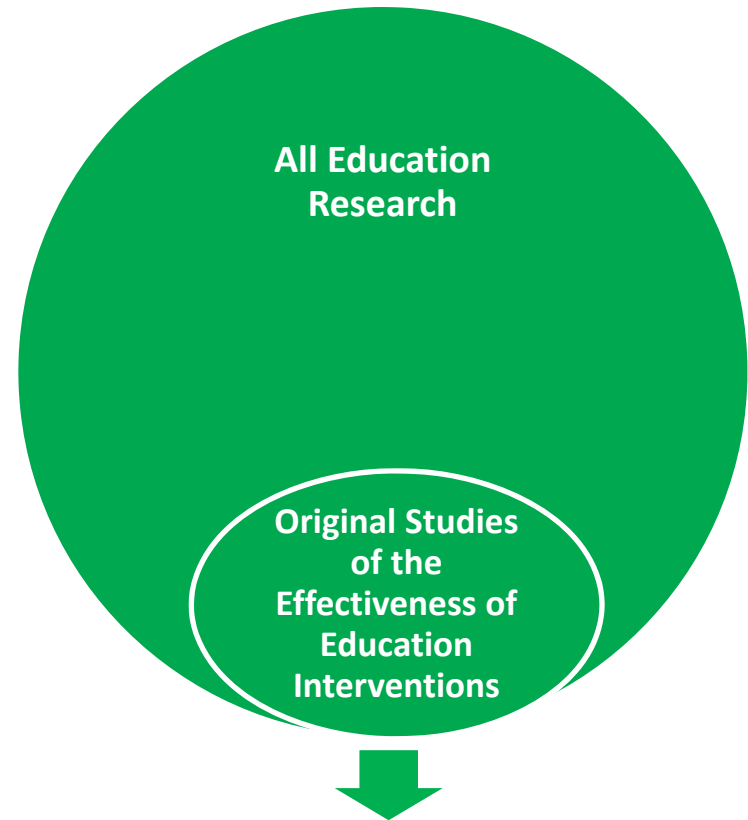
OELA
Office of English Language Acquisition

2017 Project Directors Meeting

In Pursuit of Higher Education for All

What is the What Works Clearinghouse™?

- Since 2002, the **WWC** has been an initiative of ED's [Institute of Education Sciences](#) (IES)
- The WWC reviews, rates, and summarizes **original** studies of the **effectiveness** of education **interventions** (policies, programs, practices, or products)
- The WWC does **not** rate
 - Qualitative studies
 - Descriptive studies
 - Studies that re-analyze or synthesize others' data
 - The quality of **interventions** (as opposed to **studies** of interventions)



Reviews of studies are documented at whatworks.ed.gov; **findings** are reported from **studies that meet WWC standards**



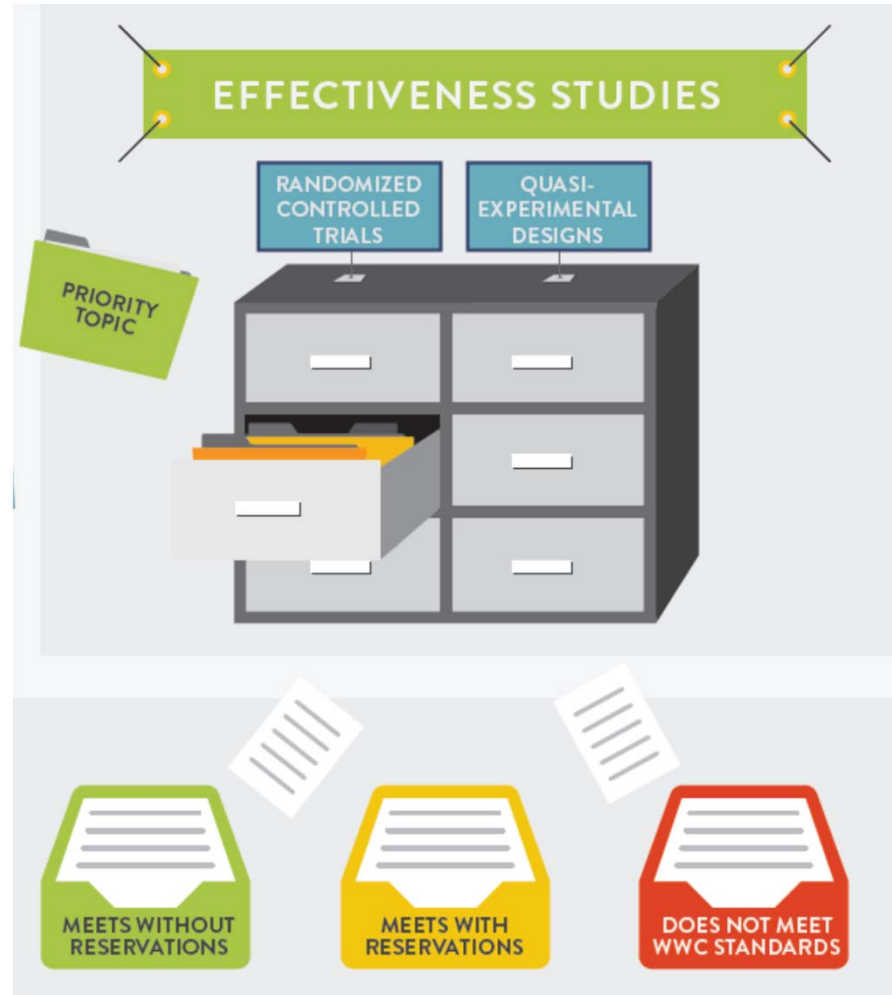
OELA
Office of English Language Acquisition

2017 Project Directors Meeting

In Pursuit of Higher Education for All

What Works Clearinghouse™ Standards

- Developed by panels of experts for different types of study designs:
 - **Group designs** (randomized controlled trials and quasi-experimental designs)
 - **Regression discontinuity designs**
 - **Single case designs**
- Focus on **internal validity** of estimates (whether an estimated **impact** is valid or likely to be biased)
- Applied by teams of **certified reviewers** using a [review protocol](#) to give studies one of 3 ratings:



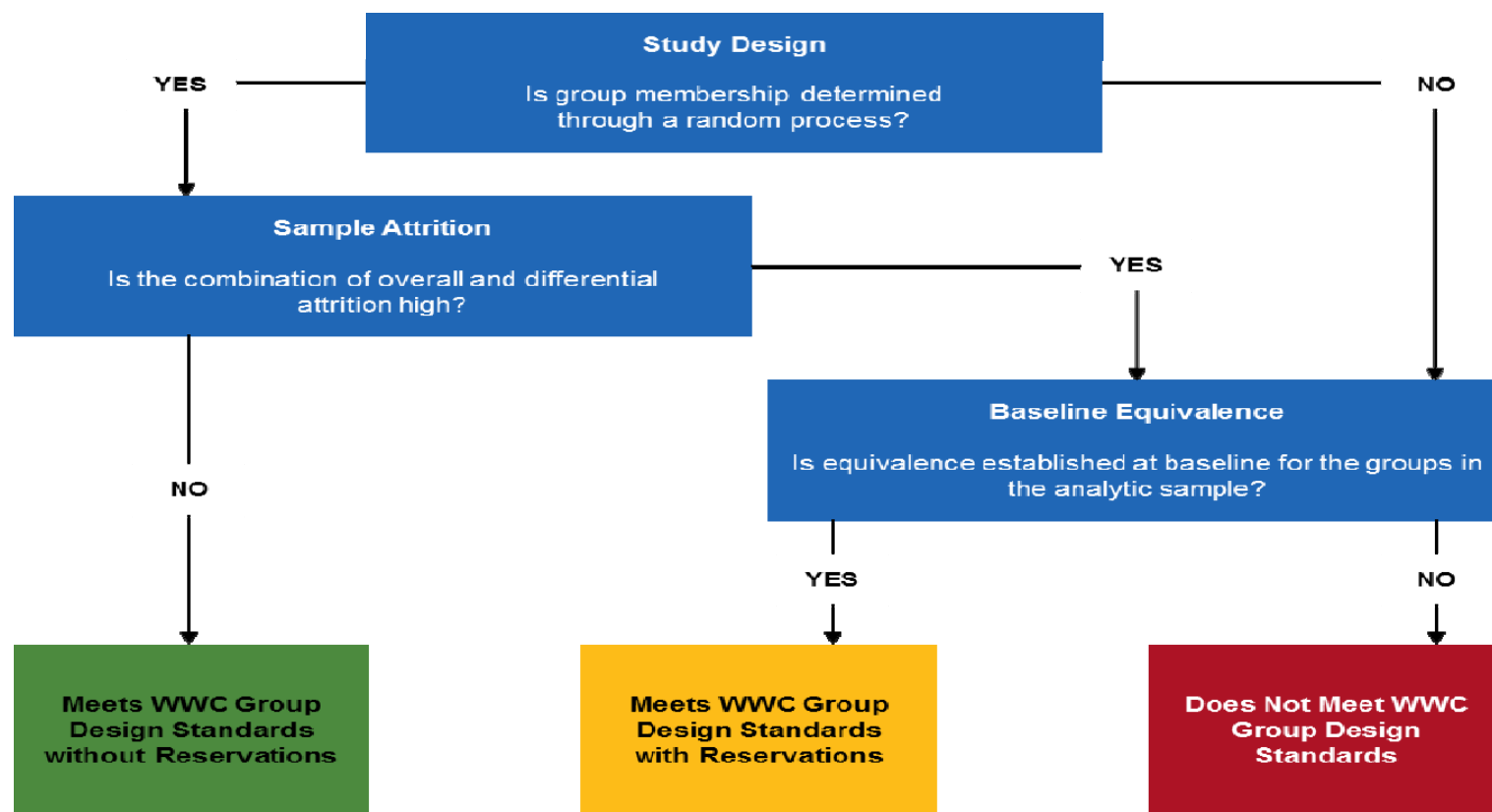
OELA

Office of English Language Acquisition

2017 Project Directors Meeting

In Pursuit of Higher Education for All

WWC Review of a Group Design Study



NOTE: the *sign*, *size*, and *statistical significance* of the estimated effect of the intervention are reported by the WWC but do *not* affect the WWC study rating



OELA
Office of English Language Acquisition

2017 Project Directors Meeting
In Pursuit of Higher Education for All

Identifying the Treatment, Counterfactual, and Research Design

- What is the ***intervention*** of interest for your impact study?
- Is the intervention received by *all* or only *some* of the individuals served by the project?
- How will a ***comparison group*** not receiving the intervention be formed?
 - Lottery
 - Measure of need
 - Matched comparison group



OELA
Office of English Language Acquisition

2017 Project Directors Meeting

In Pursuit of Higher Education for All

Identifying Outcomes and Baseline Characteristics Needed for WWC Review

- Are the relevant ***outcomes*** you expect to measure eligible for review under a WWC protocol, such as the
 - Review of Individual Studies Protocol
 - English Language Learners Evidence Review Protocol
 - Teacher Training, Evaluation, and Compensation Evidence Review Protocol
- Do you expect to collect the ***pre-intervention data*** required by a WWC protocol to establish baseline equivalence?



OELA
Office of English Language Acquisition

2017 Project Directors Meeting

In Pursuit of Higher Education for All

For more Information:

Jonathan Jacobson

Jonathan.Jacobson@ed.gov







OELA
Office of English Language Acquisition

2017 Project Directors Meeting

In Pursuit of Higher Education for All

Connect with the WWC and TA Resources

- The WWC Home Page
 - whatworks.ed.gov → <https://ies.ed.gov/ncee/wwc/>
- The WWC Help Desk
 -  <http://ies.ed.gov/ncee/wwc/ContactUs.aspx>
- Follow the WWC
 -  <http://facebook.com/whatworksclearinghouse>
 -  <https://twitter.com/WhatWorksED>
 -  <http://ies.ed.gov/newsflash/?url=%2Fncee%2Fwwc%2Findex%2Easp&site=What+Works+Clearinghouse>
- TA Resources for Evaluators Planning Rigorous Impact Studies
 - <https://ies.ed.gov/ncee/projects/evaluationTA.asp>



OELA
Office of English Language Acquisition

2017 Project Directors Meeting

In Pursuit of Higher Education for All